

Art & Technology

Fine Art . Textiles . 3D Design . Graphics

You can only choose one of the above for your options



Fine Art . Textiles . 3D Design . Graphics Structure:



Year 9 Art, Textiles, 3D, Graphics

Support Material - Sketchbooks

Shipwreck theme project

&

Artist / Designer based research and analysis



Year 10 and one term in Year 11 - Boards

Fine Art - Project 1
Collections

Textiles- Project 1
To be confirmed

3D Design – Project 1
Gadget Tidy

Graphics – Project 1
Rebrand an album cover

Fine Art - Project 2
Choose from 5 starting points

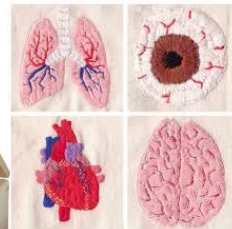
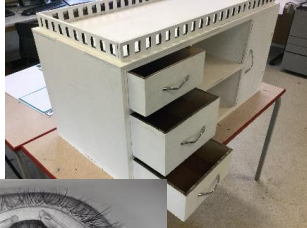
Textiles - Project 2
Choose from 5 starting points

3D - Project 2
Choose from 5 starting points

Graphics - Project 2
Choose from 5 starting points

January Year 11 - Boards

Externally set project
Choose from 7 starting points
10 hour (2 day) exam



Course expectations and criteria

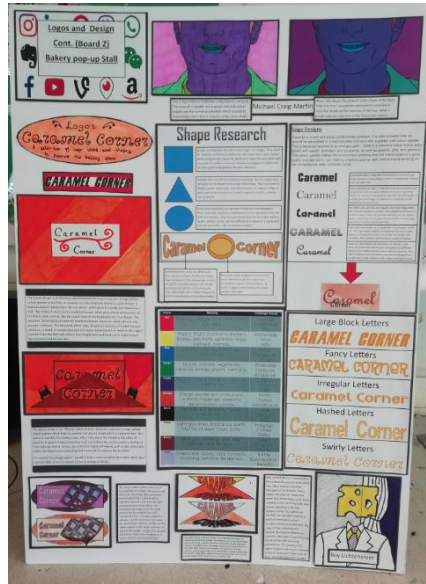
Fine Art . Textiles . 3D Design . Graphics

- Expressing ideas, using your imagination and creativity, and learning new skills.
- To develop your work from start to finish, showing a journey of how your work progresses.
- You will incorporate analytical thinking and problem solving skills.
- To respond to a given brief
- Develop your knowledge on a variety of materials and artists/ designers.

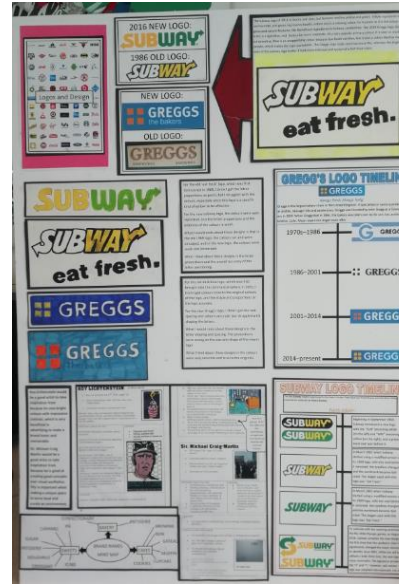
Example of Boards for Project 1, 2 and externally set question



AO1: Develop ideas through investigations, demonstrating critical understanding of sources:
Telling a story with in the work



AO2: Refine work by exploring ideas, selecting and experimenting with appropriate media, materials, techniques and processes: **Using a range of materials**



AO3: Record ideas, observations and insights relevant to intentions as work progresses:
Annotations and research



AO4: Present a personal and meaningful response that realises intentions and demonstrates understanding of visual language:
Final Piece

Course Structure

Fine Art . Textiles . 3D Design . Graphics

You can only choose one for your options

Coursework Unit: 60%

year 9 – Autumn Term in year 11

Component 1: Portfolio

What's assessed

A portfolio that in total shows explicit coverage of the four assessment objectives. It must include a sustained project evidencing the journey from initial engagement to the realisation of intentions and a selection of further work undertaken during the student's course of study.

How it's assessed

- No time limit
- 96 marks
- 60% of GCSE

Non-exam assessment (NEA) set and marked by the school/college and moderated by AQA during a visit. Moderation will normally take place in June.

Exam Unit: 40%

Spring Term year 11 – Summer Term Year 11

+

Component 2: Externally set assignment

What's assessed

Students respond to their chosen starting point from an externally set assignment paper relating to their subject title, evidencing coverage of all four assessment objectives.

How it's assessed

- Preparatory period followed by 10 hours of supervised time
- 96 marks
- 40% of GCSE

Non-exam assessment (NEA) set by AQA; marked by the school/college and moderated by AQA during a visit. Moderation will normally take place in June.

Career Pathway



Textiles

Fashion & Illustration
Constructed Textiles
Printed and Dyed Textiles
Surface Pattern
Stitched/Embellished Textiles
Digital Textiles
Stylist



3D Design

Architectural Design
Materials
Product Design
Manufacturing
3D Digital Design
CAD/CAM
Carpentry



Fine Art

Drawing
Painting
Sculpture
Photography
Printmaking
Mixed Media
Art Therapist
Illustration



Graphics

Communication Graphics
Design for Print
Advertising & Branding
Illustration
Package Design
Typography
Signage

